

2023 annual report to the Community

# Blakeview Primary School

Blakeview Primary School number: 1854

Partnership: Uleybury



School principal:

Teresa Harriott *T. Harriott* Signature

Date of endorsement:

10/04/2024



# Context Statement

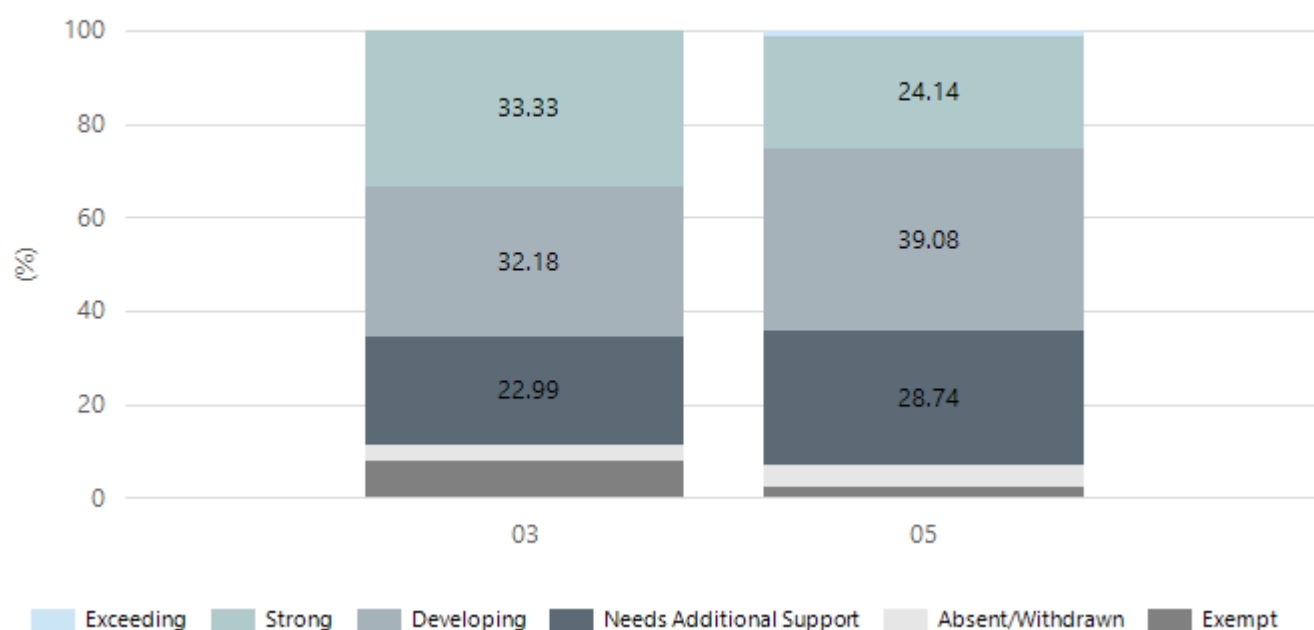
Blakeview Primary School caters for students from R-6. At the time of this report, the enrolment in 2023 is 581. Blakeview Primary School is classified as Category 3 on the Department for Education Index of Educational Disadvantage. At the time of this report, the school population includes 12% Aboriginal students, 17% students with disabilities, 7% students with English as an additional language or dialect (EALD) funded background, 3% children/young people in care. Further information about the school is available on the school's website (including its context statement), as well as the My School website.

## Performance Summary

### NAPLAN Proficiency

In 2023, the Australian Curriculum, Assessment and Reporting Authority (ACARA) - a Commonwealth Independent statutory authority - announced changes to NAPLAN performance reporting. This new way of reporting by ACARA that NAPLAN results from 2023 will not be comparable to previous years. The new approach replaces the previous numerical NAPLAN bands and the national minimum standard.

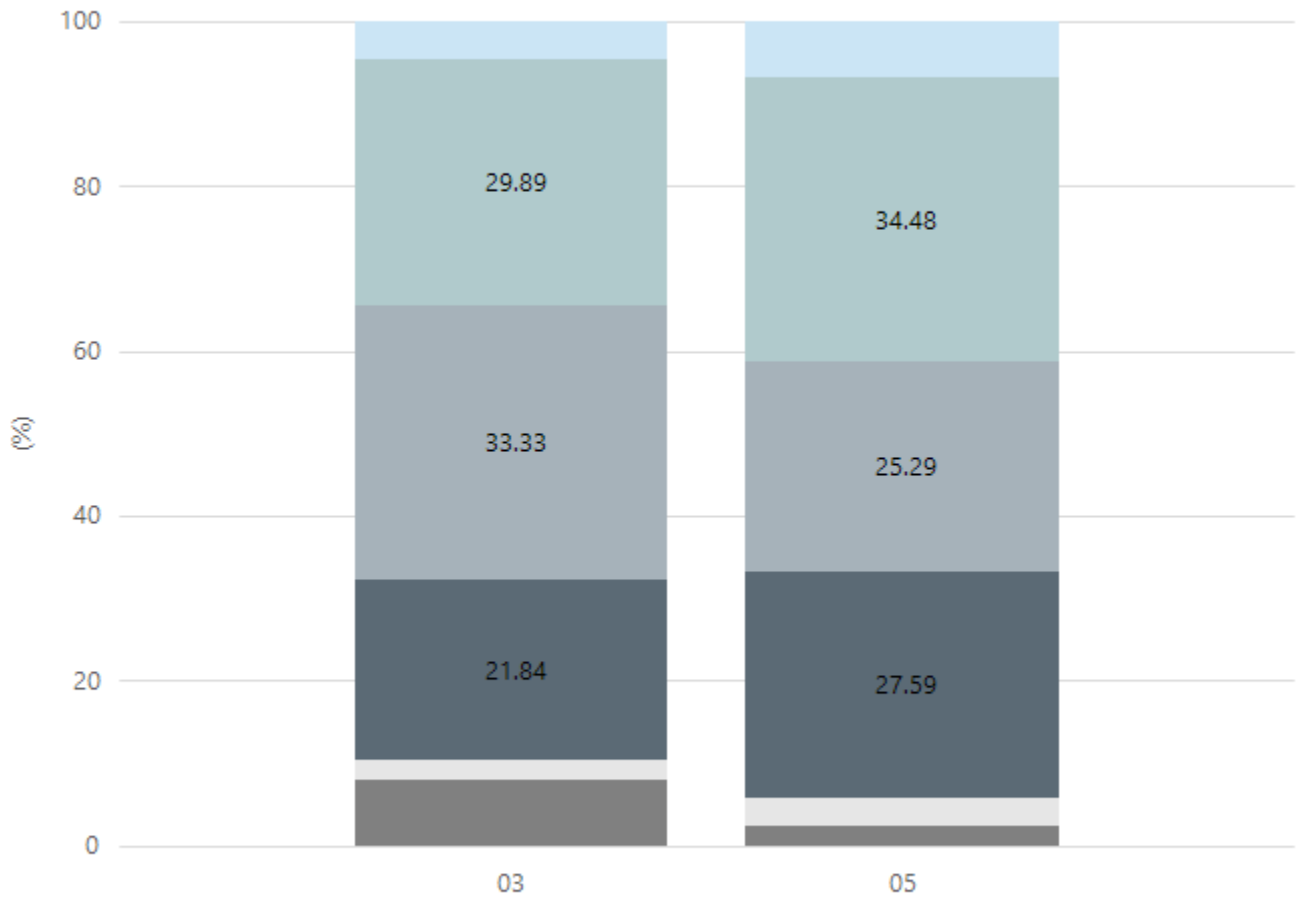
#### Numeracy



| Year Level               | 03 | 05 |
|--------------------------|----|----|
| Exceeding                |    | 1  |
| Strong                   | 29 | 21 |
| Developing               | 28 | 34 |
| Needs Additional Support | 20 | 25 |
| Absent/Withdrawn         | 3  | 4  |
| Exempt                   | 7  | 2  |
| Total                    | 87 | 87 |

Data Source: Department for Education Assessment Data Holdings, 2023. When there are less than six students in a cohort, no data is supplied.

## Reading

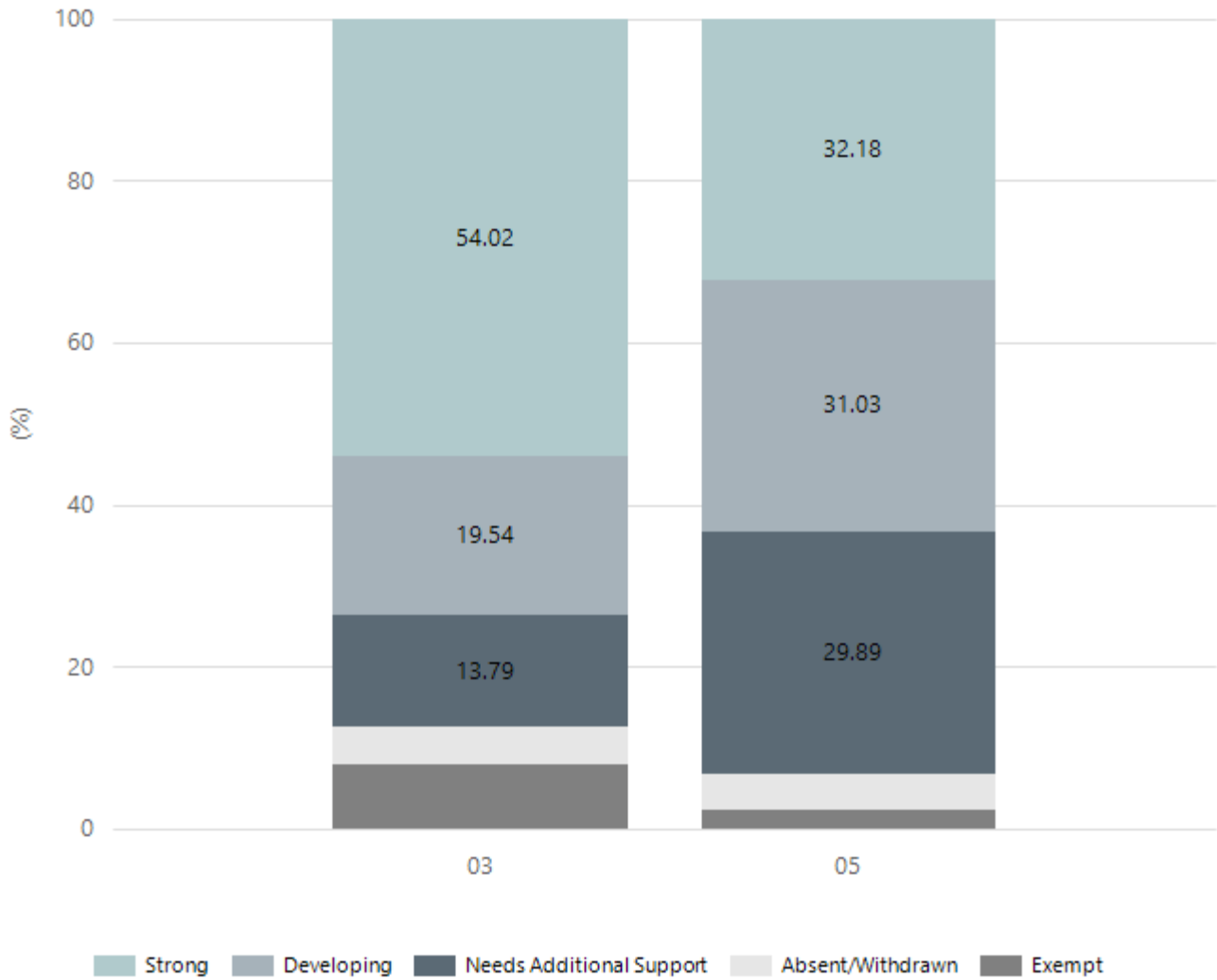


■ Exceeding 
 ■ Strong 
 ■ Developing 
 ■ Needs Additional Support 
 ■ Absent/Withdrawn 
 ■ Exempt

| Year Level               | 03        | 05        |
|--------------------------|-----------|-----------|
| Exceeding                | 4         | 6         |
| Strong                   | 26        | 30        |
| Developing               | 29        | 22        |
| Needs Additional Support | 19        | 24        |
| Absent/Withdrawn         | 2         | 3         |
| Exempt                   | 7         | 2         |
| <b>Total</b>             | <b>87</b> | <b>87</b> |

Data Source: Department for Education Assessment Data Holdings, 2023. When there are less than six students in a cohort, no data is supplied.

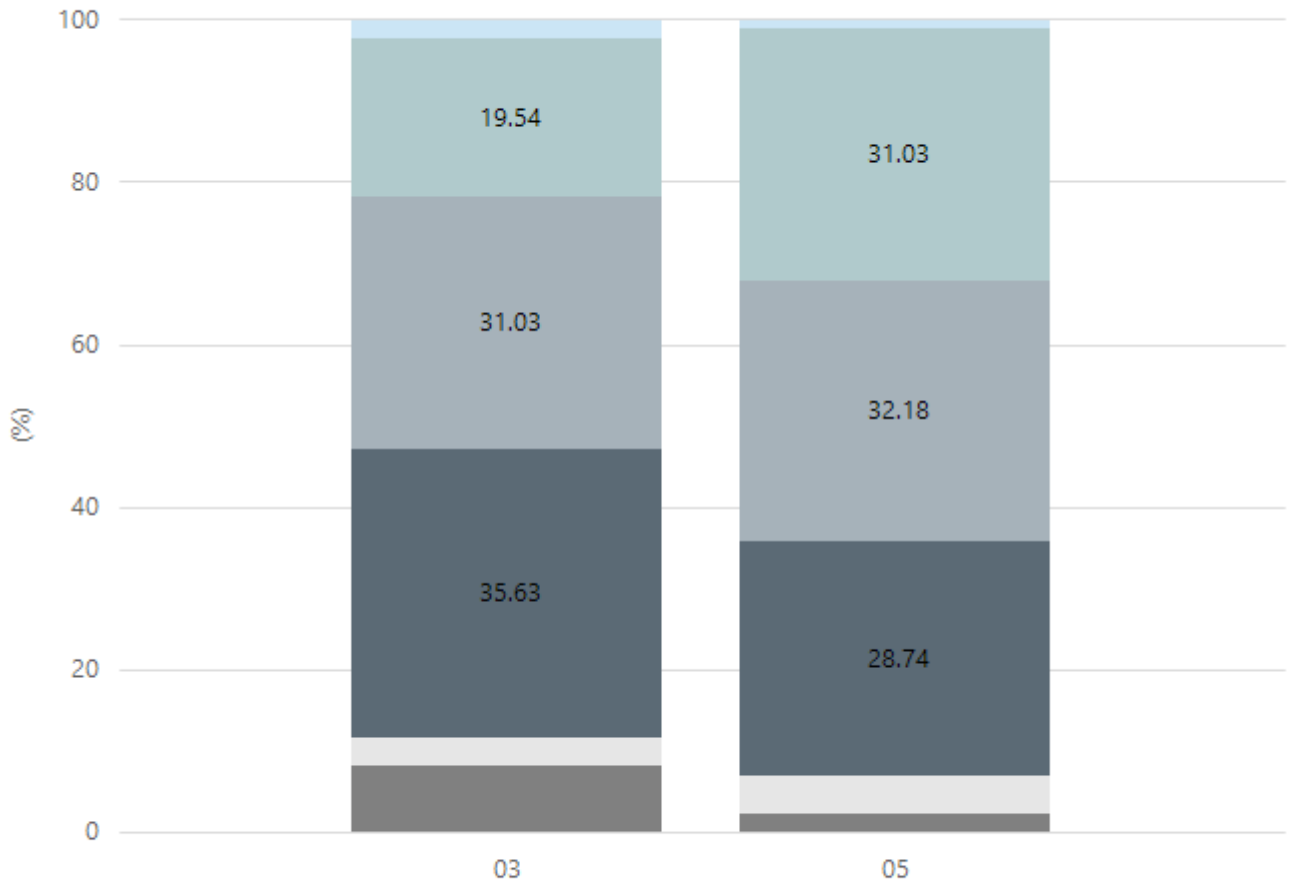
## Writing



| Year Level               | 03 | 05 |
|--------------------------|----|----|
| Strong                   | 47 | 28 |
| Developing               | 17 | 27 |
| Needs Additional Support | 12 | 26 |
| Absent/Withdrawn         | 4  | 4  |
| Exempt                   | 7  | 2  |
| Total                    | 87 | 87 |

Data Source: Department for Education Assessment Data Holdings, 2023. When there are less than six students in a cohort, no data is supplied.

## Grammar

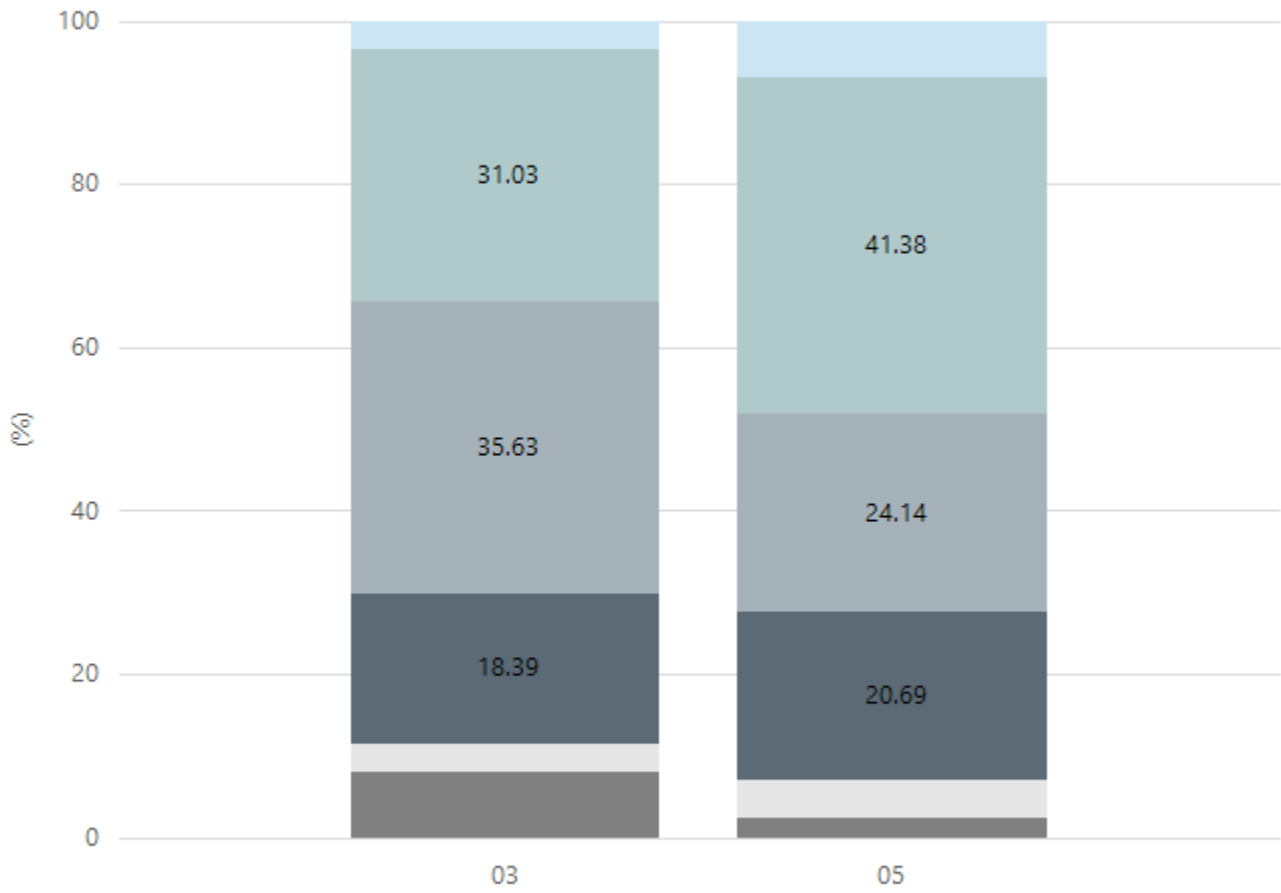


Exceeding Strong Developing Needs Additional Support Absent/Withdrawn Exempt

| Year Level               | 03 | 05 |
|--------------------------|----|----|
| Exceeding                | 2  | 1  |
| Strong                   | 17 | 27 |
| Developing               | 27 | 28 |
| Needs Additional Support | 31 | 25 |
| Absent/Withdrawn         | 3  | 4  |
| Exempt                   | 7  | 2  |
| Total                    | 87 | 87 |

Data Source: Department for Education Assessment Data Holdings, 2023. When there are less than six students in a cohort, no data is supplied.

## Spelling



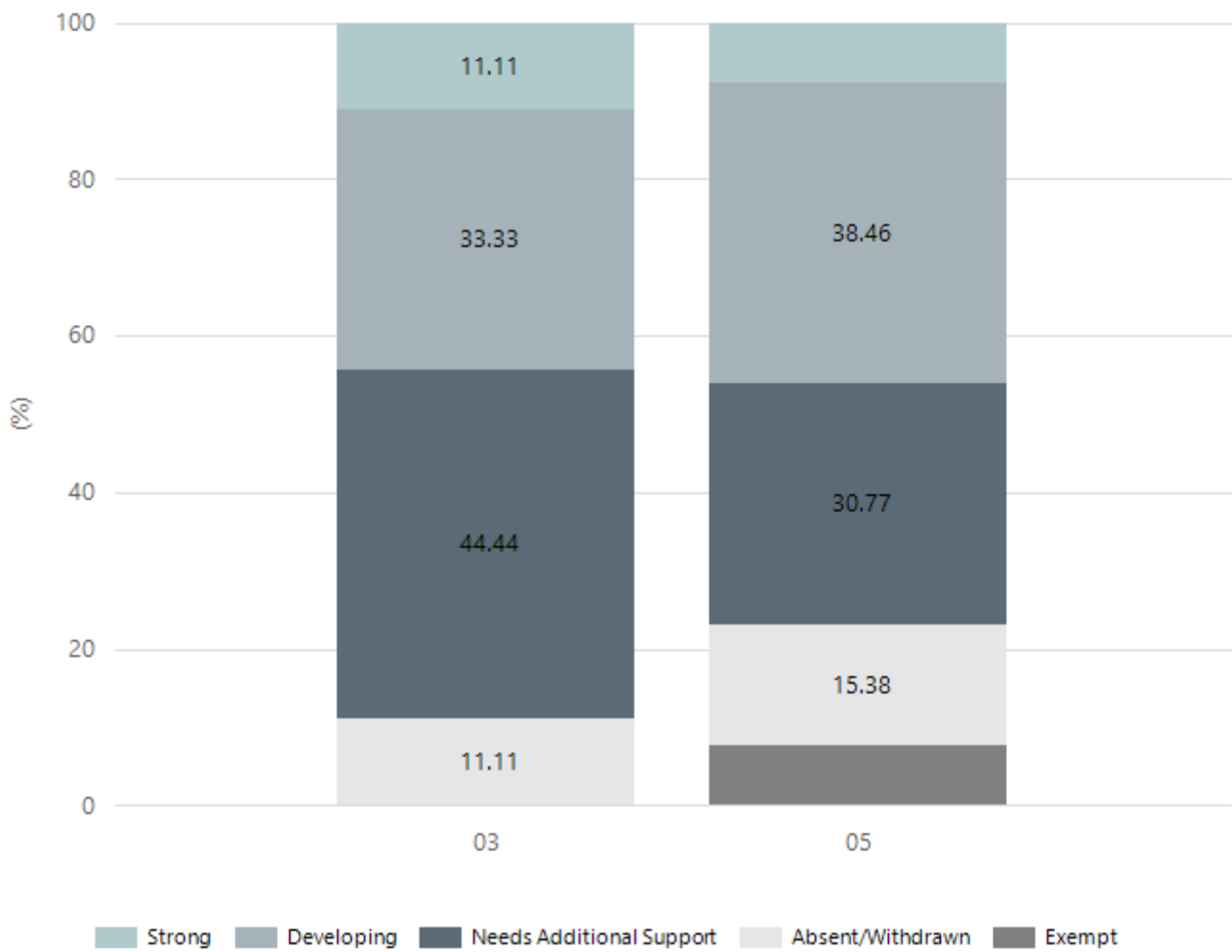
Exceeding Strong Developing Needs Additional Support Absent/Withdrawn Exempt

| Year Level               | 03 | 05 |
|--------------------------|----|----|
| Exceeding                | 3  | 6  |
| Strong                   | 27 | 36 |
| Developing               | 31 | 21 |
| Needs Additional Support | 16 | 18 |
| Absent/Withdrawn         | 3  | 4  |
| Exempt                   | 7  | 2  |
| Total                    | 87 | 87 |

Data Source: Department for Education Assessment Data Holdings, 2023. When there are less than six students in a cohort, no data is supplied.

# NAPLAN Proficiency - Aboriginal Learners

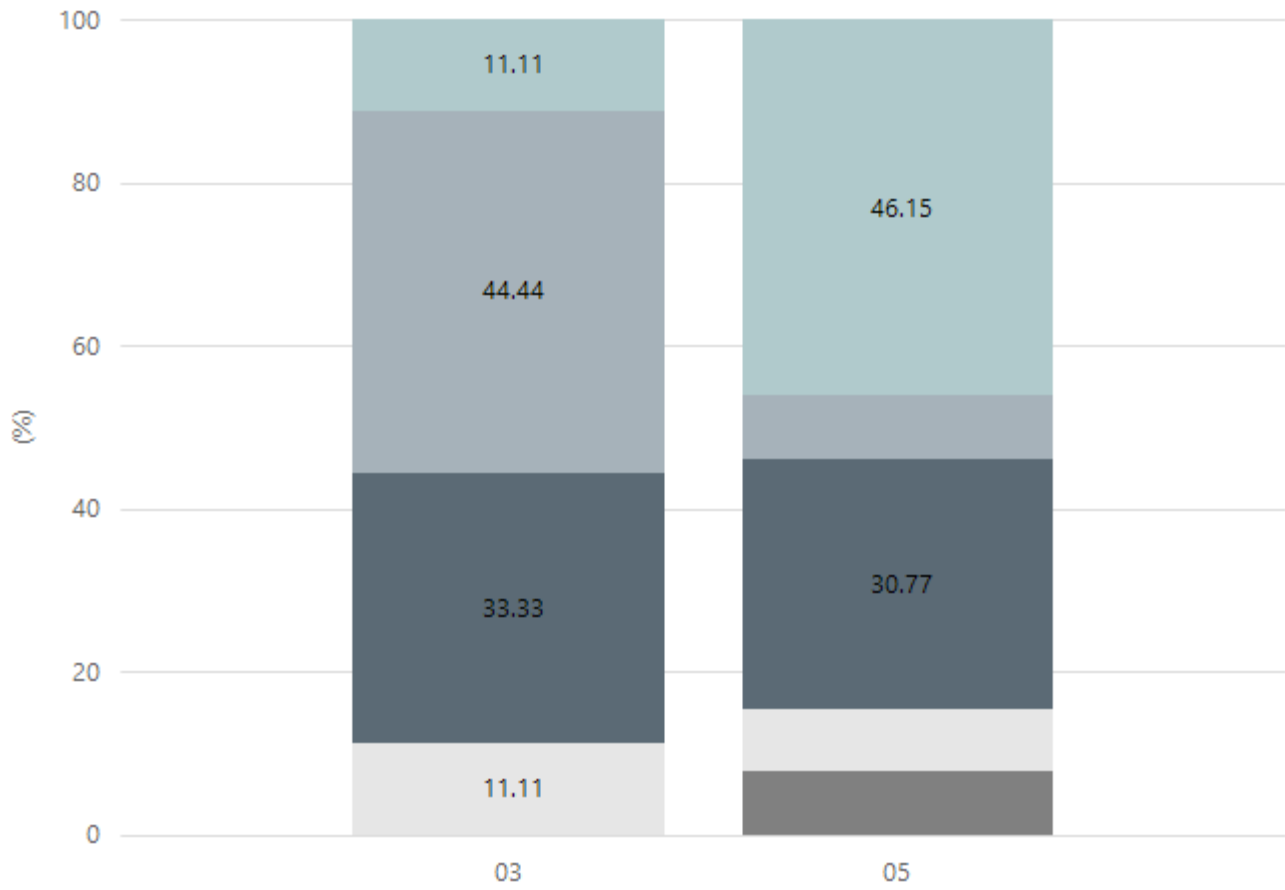
## Numeracy



| Year Level               | 03 | 05 |
|--------------------------|----|----|
| Strong                   | 1  | 1  |
| Developing               | 3  | 5  |
| Needs Additional Support | 4  | 4  |
| Absent/Withdrawn         | 1  | 2  |
| Exempt                   |    | 1  |
| Total                    | 9  | 13 |

Data Source: Department for Education Assessment Data Holdings, 2023. When there are less than six students in a cohort, no data is supplied. Only data for Aboriginal learners is displayed.

## Reading



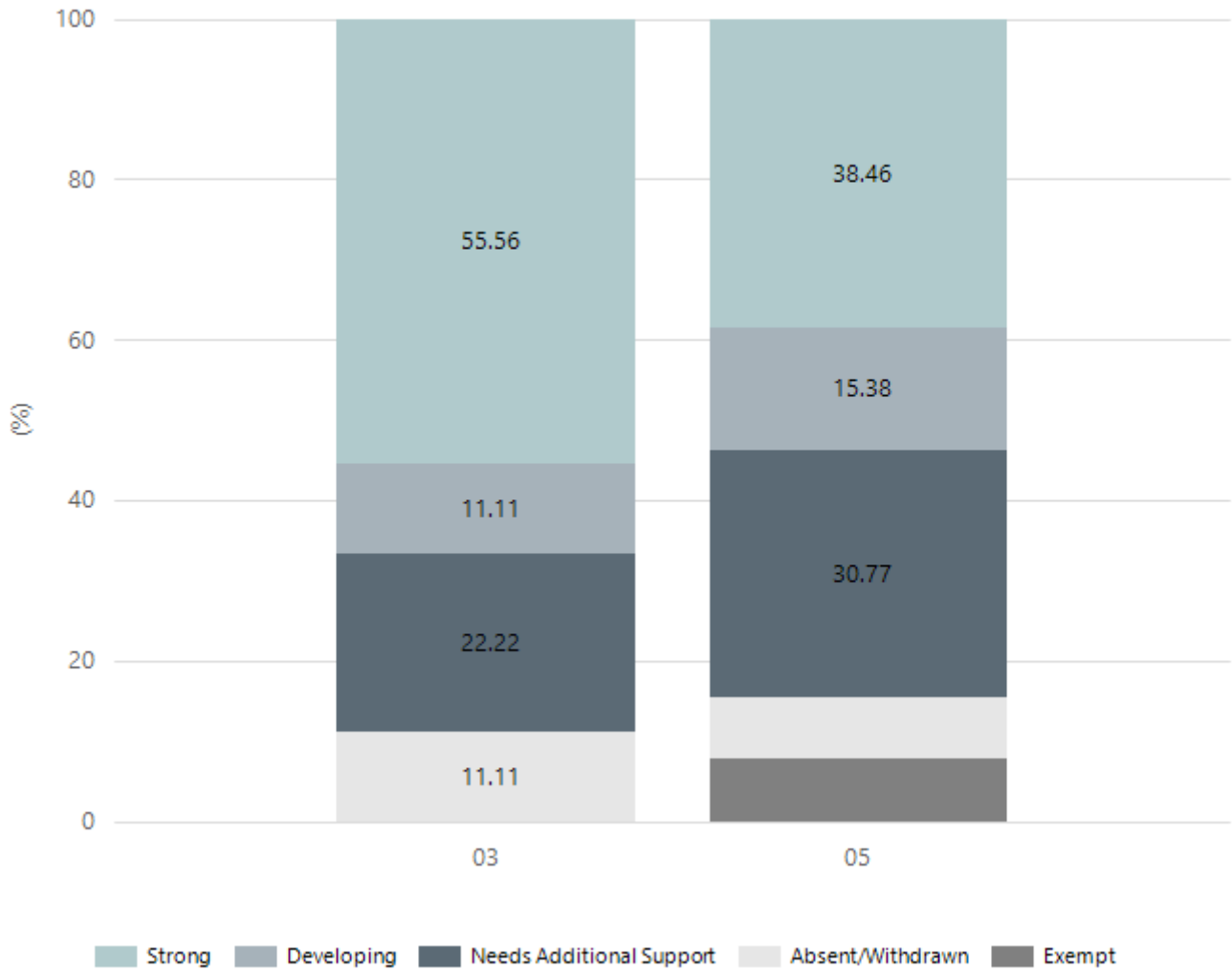
■ Strong 
 ■ Developing 
 ■ Needs Additional Support 
 ■ Absent/Withdrawn 
 ■ Exempt

| Year Level               | 03       | 05        |
|--------------------------|----------|-----------|
| Strong                   | 1        | 6         |
| Developing               | 4        | 1         |
| Needs Additional Support | 3        | 4         |
| Absent/Withdrawn         | 1        | 1         |
| Exempt                   |          | 1         |
| <b>Total</b>             | <b>9</b> | <b>13</b> |

Data Source: Department for Education Assessment Data Holdings, 2023. When there are less than six students in a cohort, no data is supplied. Only data for Aboriginal learners is displayed.



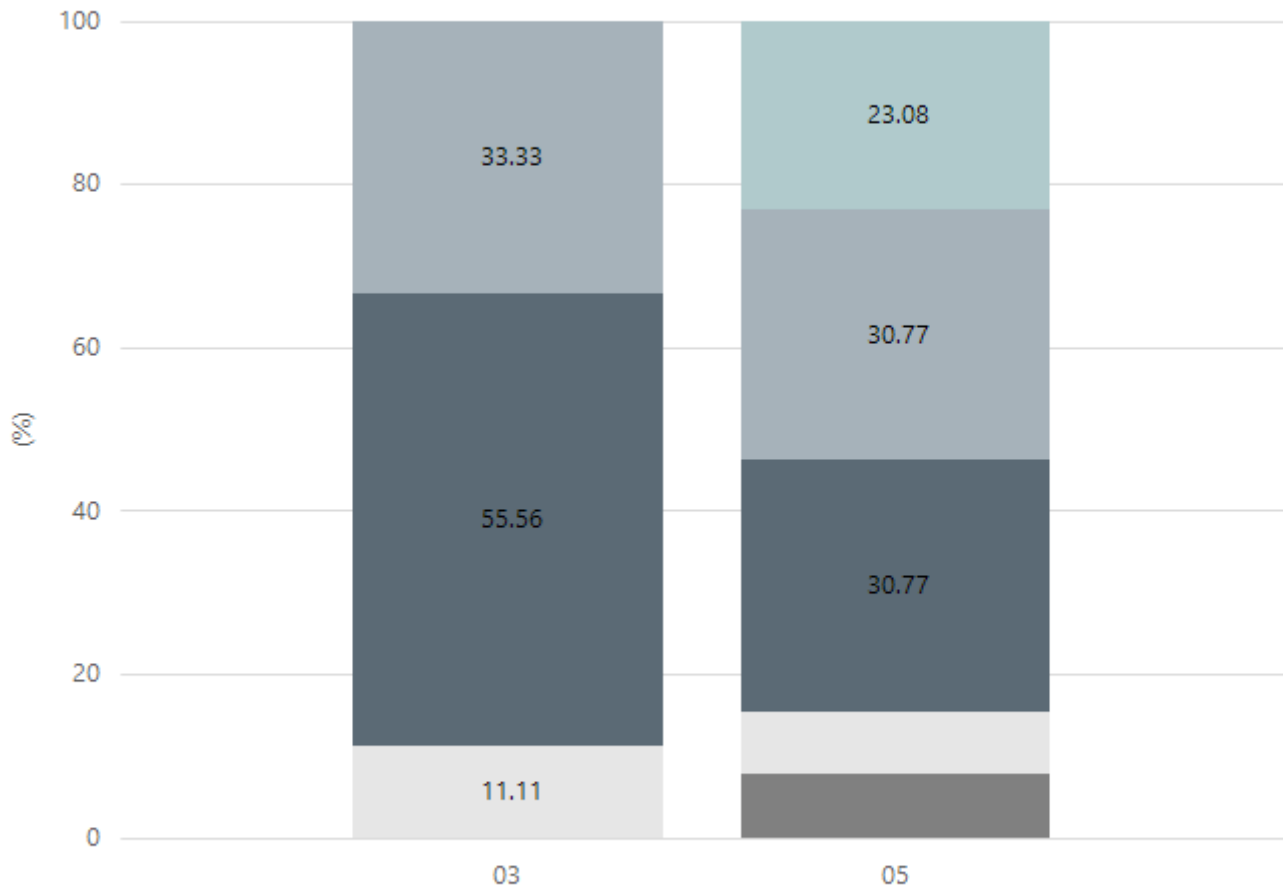
## Writing



| Year Level               | 03 | 05 |
|--------------------------|----|----|
| Strong                   | 5  | 5  |
| Developing               | 1  | 2  |
| Needs Additional Support | 2  | 4  |
| Absent/Withdrawn         | 1  | 1  |
| Exempt                   |    | 1  |
| Total                    | 9  | 13 |

Data Source: Department for Education Assessment Data Holdings, 2023. When there are less than six students in a cohort, no data is supplied. Only data for Aboriginal learners is displayed.

## Grammar

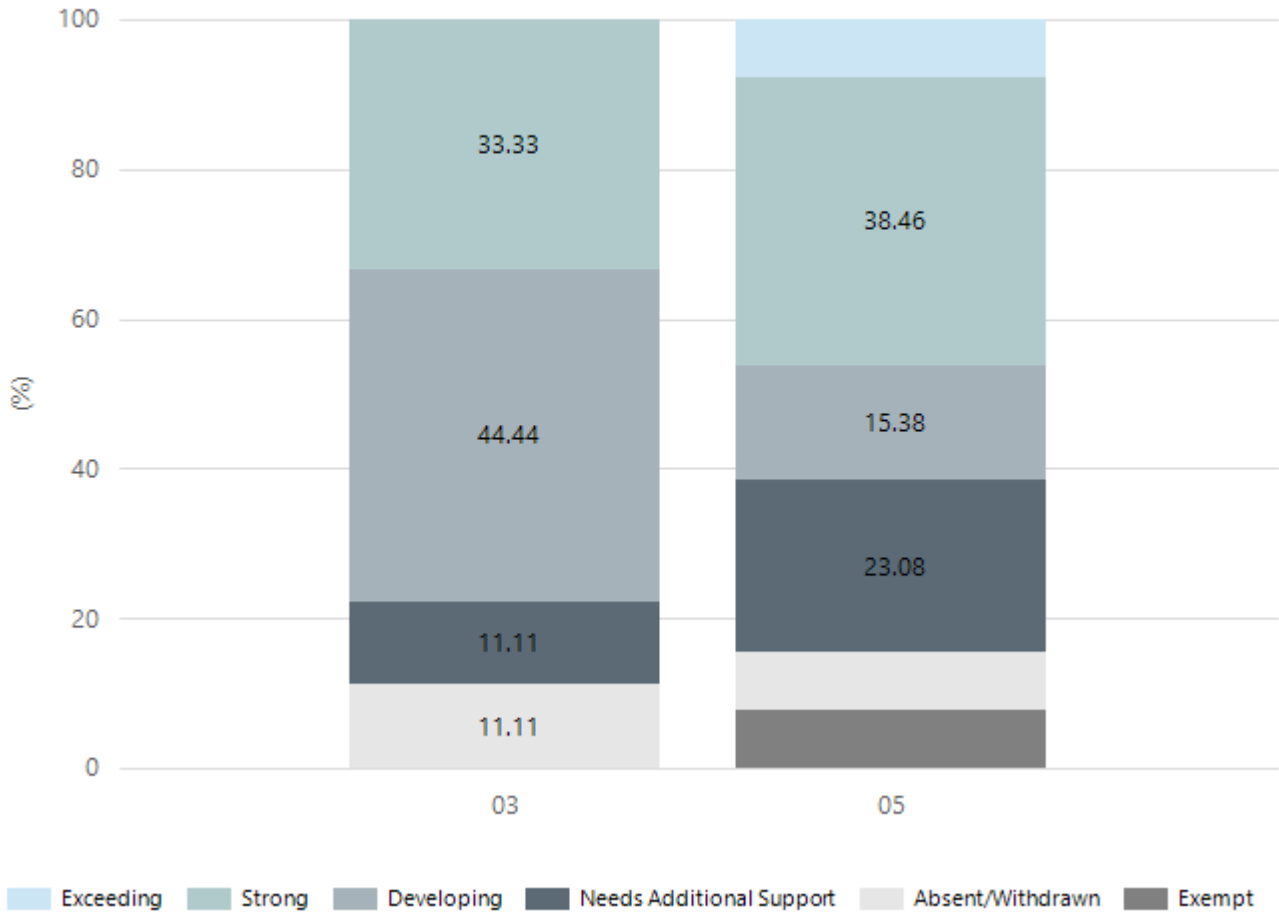


■ Strong 
 ■ Developing 
 ■ Needs Additional Support 
 ■ Absent/Withdrawn 
 ■ Exempt

| Year Level               | 03       | 05        |
|--------------------------|----------|-----------|
| Strong                   |          | 3         |
| Developing               | 3        | 4         |
| Needs Additional Support | 5        | 4         |
| Absent/Withdrawn         | 1        | 1         |
| Exempt                   |          | 1         |
| <b>Total</b>             | <b>9</b> | <b>13</b> |

Data Source: Department for Education Assessment Data Holdings, 2023. When there are less than six students in a cohort, no data is supplied. Only data for Aboriginal learners is displayed.

## Spelling



| Year Level               | 03       | 05        |
|--------------------------|----------|-----------|
| Exceeding                |          | 1         |
| Strong                   | 3        | 5         |
| Developing               | 4        | 2         |
| Needs Additional Support | 1        | 3         |
| Absent/Withdrawn         | 1        | 1         |
| Exempt                   |          | 1         |
| <b>Total</b>             | <b>9</b> | <b>13</b> |

Data Source: Department for Education Assessment Data Holdings, 2023. When there are less than six students in a cohort, no data is supplied. Only data for Aboriginal learners is displayed.

## School Attendance

| Year Level    | 2021  | 2022  | 2023  |
|---------------|-------|-------|-------|
| Reception     | 89.1% | 80.5% | 86.1% |
| Year 01       | 89.0% | 82.2% | 86.5% |
| Year 02       | 88.4% | 82.5% | 84.8% |
| Year 03       | 87.8% | 82.4% | 88.8% |
| Year 04       | 87.9% | 80.1% | 86.9% |
| Year 05       | 87.7% | 80.1% | 85.8% |
| Year 06       | 87.0% | 83.1% | 85.9% |
| Year 07       | 85.8% |       |       |
| Primary Other | 84.2% | 81.8% | 76.6% |
| Total         | 87.7% | 81.5% | 85.9% |

Data Source: Department for Education Attendance Data, Semester 1 Report 2023. A blank cell indicates there were no students enrolled. 'Primary Other' includes students enrolled in specialised education options. 'Secondary Other' includes students who have already spent a year at Year 12 and elected to undertake further study at Year 12.

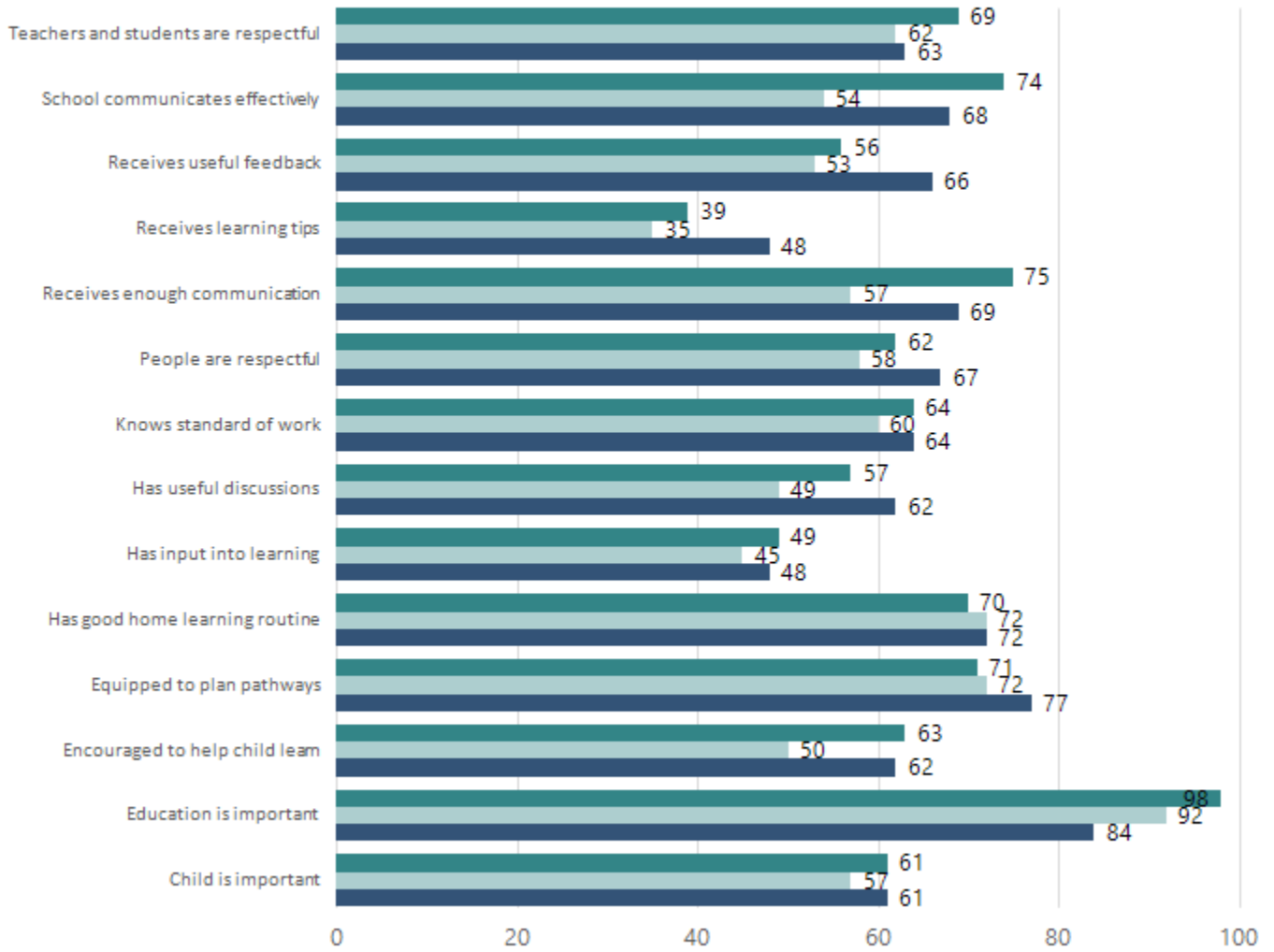
## Attendance Comment

In South Australia, all children and young people must be in school from 6 years to 16 years old. They must attend a government or non-government school full time. From age 16 to 17 however, young people must attend school or an approved learning program (such as an apprenticeship, traineeship, accredited course or university). Schools and parents must encourage and support students to come to school every day. Parents and caregivers must make sure their child is enrolled in a school, and attends school all day and everyday it is open, unless a child is sick or has an approved exemption. Teachers and leaders actively follow up when a student misses school, including recording all absences and non-attendance. All schools in South Australia have local attendance procedures governed under the Education and Children's Services Regulations 2020.

# Parent Opinion Survey Results

Proportion of agree/strongly agree response(%)

2021 2022 2023



Data Source: 2023 Department for Education Parent Opinions Survey, Term 3 2023.

## Intended Destination

| Leave Reason                             | Number | %     |
|--|--------|-------|
| NG - ATTENDING NON-GOV SCHOOL IN SA      | 6      | 19.0% |
| TA - LEFT SA FOR TAS                     | 1      | 3.0%  |
| TG - TRANSFERRED TO SA GOVERNMENT SCHOOL | 24     | 75.0% |
| WA - LEFT SA FOR WA                      | 1      | 3.0%  |

Data Source: Department for Education Destination Data Report, 2023. Data extract term 3 2023. Data shows recorded destinations for students that left the school in the previous year. Data is uploaded by schools in term 3 and may not reflect final or total figures at time of report creation.

# Highest Qualifications held by the teaching workforce and workforce composition

All teachers at this school are qualified and registered with the SA Teachers Registration Board.

| Qualification Level            | Number of Qualifications |
|--------------------------------|--------------------------|
| Bachelor's degrees or Diplomas | 43                       |
| Postgraduate Qualifications    | 10                       |

Data Source: Data extracted from Mandatory Workforce Information Collections as on the last pay date of June 2023. As self-reported by staff in the system.

Please note: Data includes staff who are Actively employed and on extended paid leave. Please note only the highest qualification of the Teaching staff is reported. Excludes any number of other certifications earned.

## Workforce composition including indigenous staff

|                       | Teaching Staff |                | Non-Teaching Staff |                |
|-----------------------|----------------|----------------|--------------------|----------------|
|                       | Indigenous     | Non-Indigenous | Indigenous         | Non-Indigenous |
| Full-Time Equivalents | 0.0            | 47.9           | 1.7                | 34.6           |
| Persons               | 0.0            | 53.0           | 2.0                | 51.0           |

Data Source: Data extracted from Mandatory Workforce Information Collection as on the last pay date of June 2023.

Please note: Data includes staff who are actively employed and on extended paid leave. "Indigenous category" is self-reported by staff in the system.

## Financial Statement

| Funding Source       | Amount         |
|----------------------|----------------|
| Grants: State        | \$8,270,497.70 |
| Grants: Commonwealth | \$671,910.93   |
| Parent Contributions | \$165,929.52   |
| Fund Raising         | \$27,005.26    |
| Other                | \$79,947.71    |

Data Source: School supplied data.

## Governing Council report 2023

2023 started with Teresa Harriott as Principal. Blakeview Primary School had just over 580 students with year 6 now being our senior year.

Term 1 saw us start the year with a rush having 84 new reception children trying to find their way around the school system.

Term 2 saw us implement a new spelling program which has been a huge success in classes for the students. Tom Atterton (Assistant Principal) shared the video about the program that is now being used by the Literacy Guarantee Unit in the Education Department to support other sites in the teaching of phonics.

During the first half of the school year - we readvertised for a Principal. I am pleased to announce that Teresa applied and won the position of Principal of Blakeview Primary school for a seven year tenure, congratulations Teresa.

For the first time since covid 19 hit We had 12 parents on governing council, we managed to hold most of our governing council meetings face to face.

Governing council decided to outsource the sausage sizzle for both sports day and the end of year concert. This was disappointing and due to having to change dates for the hot weather it was a last minute scramble to find someone to run it. For this reason, we have decided to get OSHC staff to run them in the future, it will be a good fundraiser for the OSHC and will keep the money in the school for all students to benefit from.

We ran Mother's Day & Father's Day stalls as well as sports day with parents onsite.

We have received and updated a number of policies including the Uniform Policy, the School Attendance Policy, the Schools Mobile Phones and Personal Device Policy, the Parent and School Communication Policy, the School Complaint Management



and Resolution Policy and the  
School Student Behaviour Policy.

We had a visit from Matt Kreig  
from Driven Within to talk to us  
about our agreements of  
understanding around our school  
values.

Our 85 Year 6's graduated and  
had time to celebrate with friends  
and family. There were speeches,  
food and dancing.

Our end of year concert went well  
with many parents and family in  
attendance, there was a food van  
as well as a coffee van.

Well done to all staff students and  
families at Blakeview Primary  
School.

Colleen Hage Governing Chair  
Person